

FILEMOVER™

laplink®
connect your world

Quick Start Guide

Copyright Notice

No part of this publication may be reproduced, transmitted, transcribed, stored in a retrieval system, or translated into any human or computer language, in any form or by any means, without the express written permission of Laplink Software, Inc., 10210 NE Points Drive, Suite 400, Kirkland, WA 98033, U.S.A.

Trademarks

© Copyright 2005 Laplink Software, Inc. All rights reserved. Laplink, the Laplink logo, Connect Your World, FileMover, and SpeedSync are either registered trademarks or trademarks of Laplink Software, Inc. in the United States and/or other countries. Other brands and products are trademarks of their respective holder(s). SpeedSync technology is covered by U.S. Patent No. 5,446,888 and related filings in the U.S. and other countries.

Patents

SpeedSync® U.S. Patent Number 5,446,888

This product may contain one or more of the following licensed products: RSA Data Security, Inc. MD5 Message-Digest Algorithm. Copyright © 1991-2, RSA Data Security, Inc. Created 1991. All rights reserved. ZLIB general purpose compression library, version 1.0.4. July 24, 1996. Copyright © 1995-1996 Jean-loup Gailly and Mark Adler.

MN-FMV120-01-EN

Contents

Introducing FileMover 4

Before installing FileMover 5

Installing FileMover 6

Allowing a connection on the other computer 10

Connecting over a serial cable 11

Connecting over a USB cable 12

Connecting over a network 13

User Names and Passwords 15

Transferring files between computers 16

Disconnecting 18

Getting help 19

Introducing FileMover

Laplink® software's FileMover® provides a fast, secure, and easy way to move files and folders from one computer to another. FileMover lets you connect two PCs by serial cable, by USB cable, or over a network. You can then use the side-by-side file display to drag files and folders from one computer and drop them into folders on the other.

FileMover is especially useful for sharing files or updating your laptop before you hit the road. FileMover's patented SpeedSync® technology actually updates changes instead of transferring and replacing entire files, saving you valuable time.

Only people you allow can access your data. You can protect FileMover access to your computer by restricting the types of incoming connections to allow, and also by controlling which individuals can connect. FileMover even works with your Microsoft network domain authentication for the most secure file transfers.

Before installing FileMover

You install FileMover on the two computers that you want to connect. Be sure that both computers meet these installation requirements:

- Microsoft Windows NT version 4 with Service Pack 6*, Windows 98, Windows ME, Windows 2000, Windows XP, or Windows 2003.
- Microsoft Internet Explorer 4.0 or later
- Minimum 32 MB of RAM
- Minimum 5 MB of free disk space

* Windows NT does not support USB connections. You can connect only by serial cable or by network with Windows NT.

Installing FileMover

A simple setup program walks you through the installation of FileMover on your computer.

During setup, you are asked to provide a user name and password for incoming connections. This is information anyone connecting to your computer needs in order to have access. After setup, you can change this information, or switch to another authentication method if you prefer. For more information, see the *FileMover User's Guide* or FileMover Help.

Note: Do not install FileMover with a Laplink USB cable plugged in to the computer.

To install FileMover:

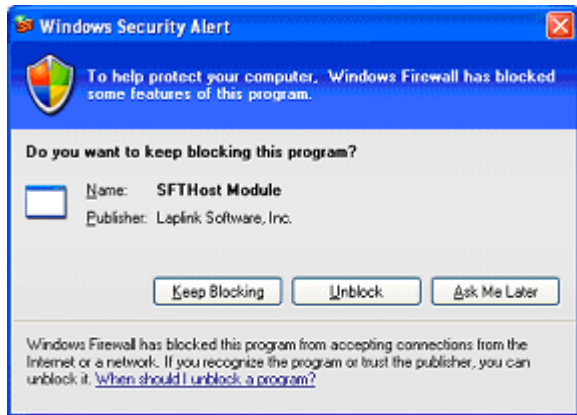
- 1 Close all programs running on the computer.
 - **Installing from CD:** Insert the FileMover CD in a CD-ROM drive. On the FileMover Welcome screen, click Next. If the Welcome screen does not appear, open Windows Explorer and double-click FileMover.exe on the FileMover CD-ROM.

Quick Start Guide

- **Installing from download:** If you downloaded FileMover from the Web, double-click the FileMover.exe file in the folder where you downloaded FileMover.
- 2 Run the setup program FileMover.EXE.
 - 3 On the Customer Information screen, type your name, company name, and serial number. Click Next.
 - **If you installed from CD**, your serial number is located on the FileMover CD sleeve.
 - **If you downloaded Filemover** or have already registered the product, go to the My Downloads section of Laplink My Support page <http://www.laplink.com/mysupport/mystore.asp>.
 - If you can't find your serial numbers, or to learn more about serial numbers, go to <http://www.laplink.com/support/filemover.asp>.
 - 4 On the Destination Location screen, click Next to accept the default folder in which to store FileMover program files.
 - 5 Click Next to start the installation.

FileMover 1.2

- 6 If you are installing FileMover on a Windows XP machine with Service Pack 2 installed, you will get the screen seen below, asking if you want to Unblock the program.



You might get a similar message if other firewall software is running on your PC. Click Unblock to continue with the FileMover software installation.

- 7 On the Create Default Account page, type a name and password to secure access to the computer. Write them down somewhere safe.
- 8 Type the password again and then click Next.

Quick Start Guide

- 9 Click Finish to complete the installation.
- 10 If prompted, restart your computer.

Allowing a connection on the other computer

Once you've installed FileMover you are ready to connect to another computer and start transferring files. Before you begin, however, you need to ensure:

- FileMover is installed on the other computer—for instructions on installing FileMover, see [page 6](#).
- FileMover Host is enabled on the other computer. Hosting is enabled by default, but it may have been disabled since installation. To re-enable it, on the other computer, click the Connect menu and click Enable Host. You have the authentication needed to connect to the other computer—for information on authentication, see the *FileMover User's Guide*.

Connecting over a serial cable

To connect by serial cable:

- 1 Attach one end of the Laplink serial cable to a serial port on each computer.
 - 2 On the Connect menu, click Connection Wizard.
 - 3 Click Serial Cable.
 - 4 Click Next to connect.
- If you have difficulty connecting, consult the *FileMover User's Guide*.

NOTE If you require a Laplink Serial cable, visit www.laplink.com or call (800) LAPLINK.

Connecting over a USB cable

To connect by USB cable:

- 1 Attach one end of the Laplink USB cable to a USB port—or USB hub—on each computer.

Caution: Use only a Laplink USB cable to connect the two computers. Using another cable can damage your system.

- 2 On the Connect menu, click Connection Wizard.
- 3 Click USB Cable.
- 4 Click Next button connect.

If you have difficulty connecting, consult the Troubleshooting chapter in the *FileMover User's Guide*.

Note: Windows NT does not support USB connections. With Windows NT you can connect by serial cable or over a network.

NOTE If you require a Laplink USB cable, visit www.laplink.com or call (800) LAPLINK.

Connecting over a network

When you connect over a network, depending on your network settings you can either select from a list of computers running FileMover or type a computer name or IP address of the other computer.

NOTE You have the option of saving the other computer's connection information as a Quick Connect for easy connecting later.

To connect over a network:

- 1 On the Connect menu, click Connection Wizard.
- 2 With Network selected, click Next.
- 3 Click Browse.
- 4 Select or add the computer you want to connect to:
 - If the computer you want to connect to is in the list, click its name and click OK to connect immediately.
 - If the computer you want to add is not in the list, follow these steps:
- 5 Click New.

FileMover 1.2

- 6 Type the name of the computer or its IP address and then click Next.
- 7 Type the user name and password required to access the computer using FileMover.
- 8 Type the password again to confirm it and then click Next.
- 9 Click Yes and then type a name to identify the Quick Connect, such as:
`amos_desktop`
- 10 Click Yes and then click Done to connect to the computer.

The next time you connect to this computer, use the Quick Connect for faster connecting.

User Names and Passwords

The default setting for FileMover is to request a username and password in order to establish a connection. You must establish a username and password during the initial installation of FileMover on the computer.



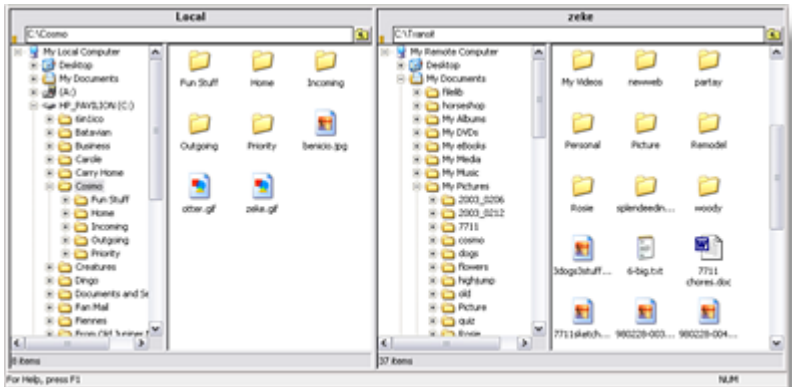
When attempting to connect to a host computer, you will see this screen requesting your user-name & password

If you do not wish to require a username & password in order to establish a connection, perform the following steps on the Host computer:

1. Cancel the Connection Wizard (if it comes up).
2. Click on Options -> Configure-> Users tab.
3. Click on Public System (no authentication required).
4. Click Ok.

Transferring files between computers

Each FileMover computer window is split into a left and a right side. The left side is designed for navigating through drives and folders: click or double-click a drive or folder to open it and display its contents. On the right side, you see the contents of the open drive and folder.



On the left side of a FileMover computer window, you can select only one folder at a time. On the right side, you can select multiple folders and files.

To select several items in sequence, click the first item; then hold the SHIFT key while you click the last item. To select items out of sequence, hold the CTRL key while you click each one. To cancel an individual selection, hold CTRL and click the item. Press CTRL+A to select all items in a list.

To copy or move files and folders:

- 1 Place the mouse pointer over a single item or one of several items you have selected on the source.
- 2 Do either of the following:
 - To copy, hold the left mouse button and move the pointer to the target folder.
 - To move, hold the SHIFT key and the left mouse button as you move the pointer to the target folder.
- 3 Once the target is highlighted, release the mouse button (and then the SHIFT key).

Disconnecting

When you are finished transferring files between computers, disconnect them.

Note: If you are connected by serial or USB cable, disconnect before you unplug the cable.

There are different ways to disconnect:

- On the Connect menu, click Disconnect.
- Let FileMover automatically disconnect for you after a certain period of time. For information on setting this option, see the *FileMover User's Guide*.
- Let FileMover automatically disconnect when a transfer is complete. For information, see the *FileMover User's Guide*.

Getting help

In addition to this booklet, FileMover includes these resources:

- *FileMover User's Guide* is a comprehensive manual for using and configuring FileMover. It is available on your FileMover CD-ROM or on the Web: www.laplink.com
- FileMover Help provides instructions on completing typical tasks. Access help from the Help menu or by pressing F1 at any time.

Contact Laplink Software

For technical support issues or questions, please visit:

www.laplink.com/support/

For other non-technical inquiries:

Email: CustomerService@laplink.com

Tel (USA): +1 425.952.6000

Tel (UK): +44 (0) 870.2410.983

Fax (USA): +1 425.952.6002

Fax (UK): +44 (0) 870.2410.984